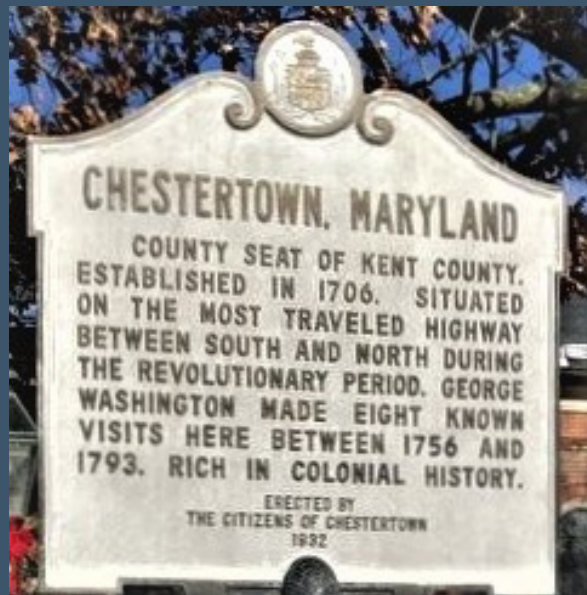


Chestertown Crash Analysis



Sent to: Chestertown Police Department

Washington College GIS Program

210 South Cross St., Suite 101

Chestertown, MD 21620

(410) 810-5034

wc_mhso@washcoll.edu

List Of Products

Page 3.	Overall Crashes Infographic
Page 4.	Overall Crash Segments and Hexagon Bins
Page 5.	Overall Crashes Temporal Topology
Page 6.	Impaired Crashes Infographic
Page 7.	Impaired Crash Segments and Hexagon Bins
Page 8.	Impaired Crashes Temporal Topology
Page 9.	Pedestrian and Bicycle Crashes Infographic
Page 10.	Pedestrian and Bicycle Crash Segments and Hexagon Bins
Page 11.	Pedestrian and Bicycle Crashes Temporal Topology
Page 12.	Speeding Crashes Infographic
Page 13.	Speeding Crash Segments and Hexagon Bins
Page 14.	Speeding Crashes Temporal Topology
Page 15.	Intersection Crashes Infographic
Page 16.	Intersection Crash Segments and Hexagon Bins
Page 17.	Intersection Crashes Temporal Topology
Page 18.	Appendix

Chestertown Crash Analysis

Overall Crashes
2016 - 2020

Overall Crash Statistics

Top Hour: 1700

Top Day: Wednesday

Top Month: May

Total Crashes
212

Crashes by Gender

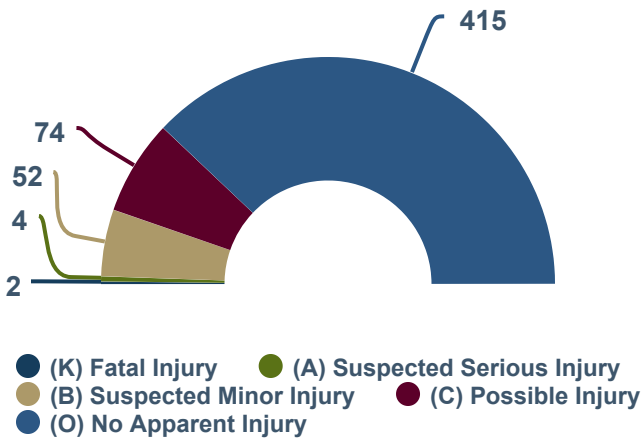
51% Male

49% Female

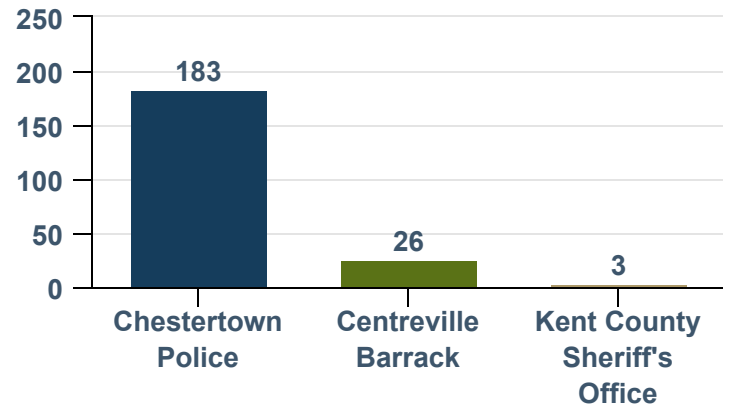


91%
of crashes were intersection-related

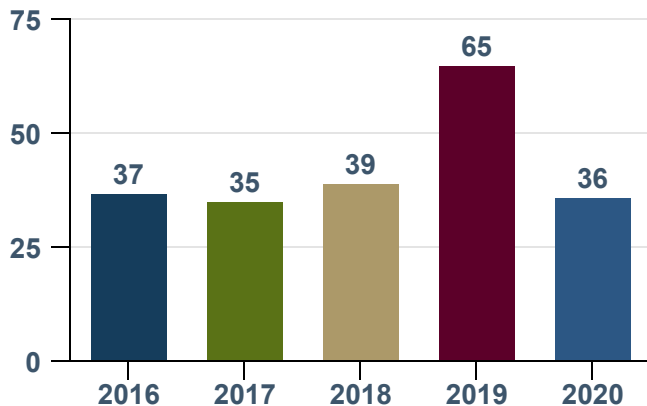
Person Report Counts



Reporting Agencies



Crashes by Year

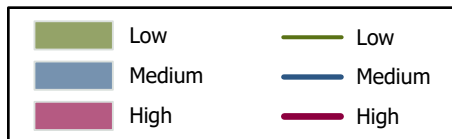
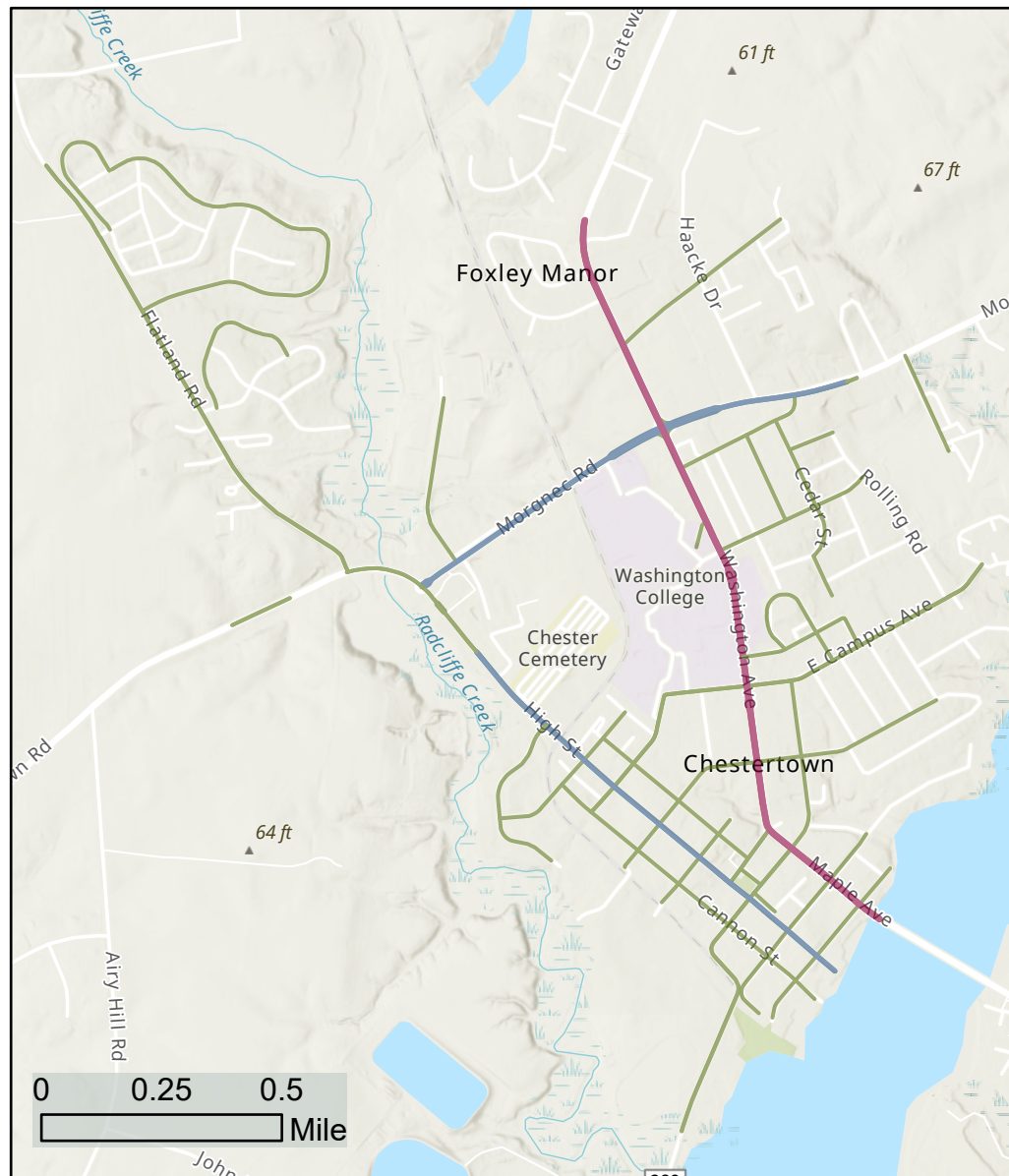
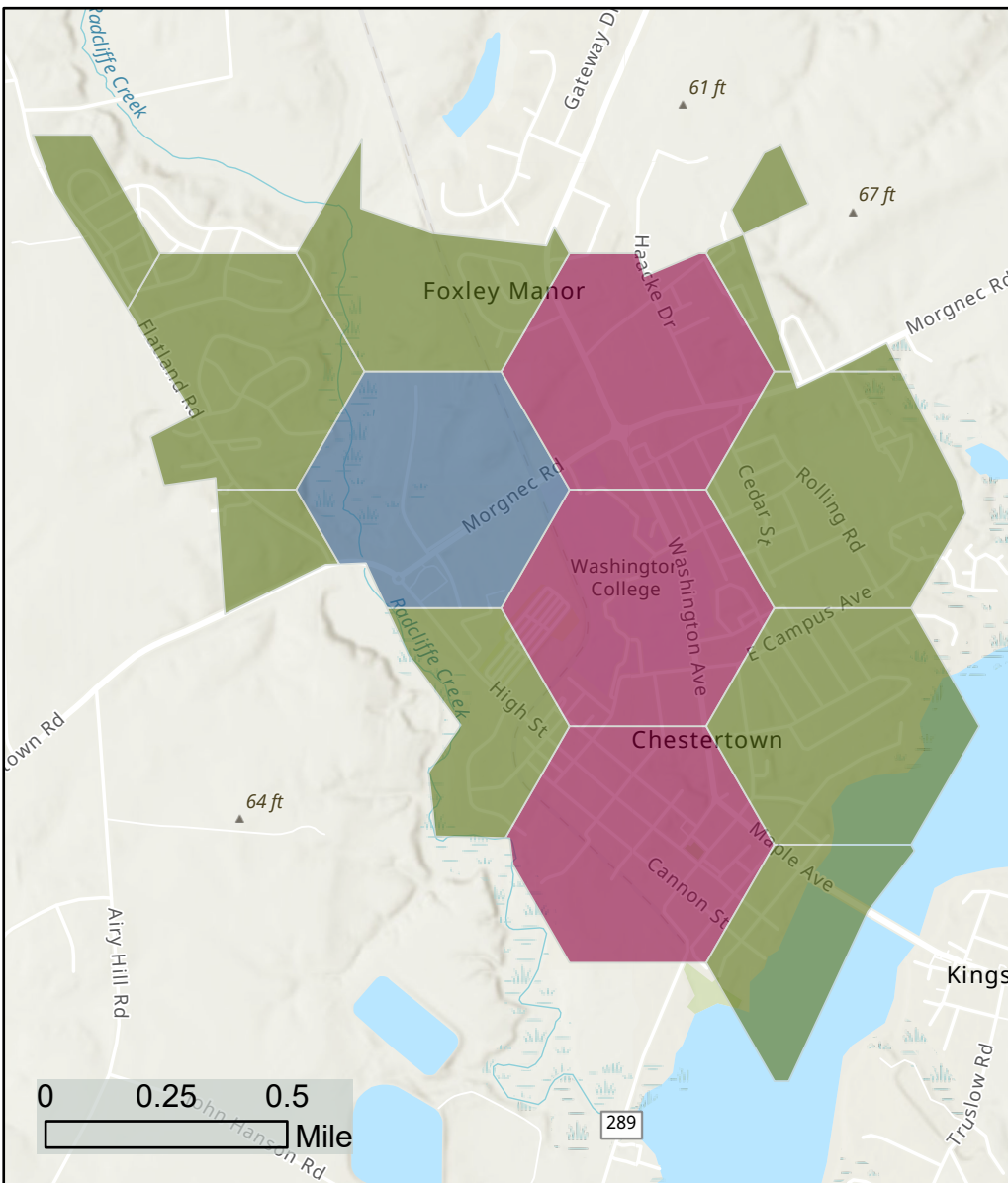


Top Roads Where Crashes Occurred

1. Washington Ave
2. High St
3. Morgnec Rd

Chestertown Crash Analysis

Overall Crashes 2016 - 2020

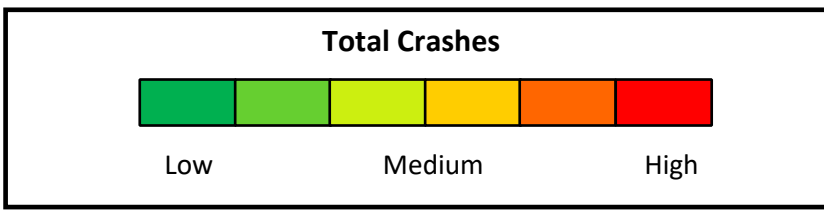


Day and Time Comparison

Chestertown Overall Crashes 2016—2020

Time of Day		Day of Week	
0000	2	Sunday	15
0100	2	Monday	30
0200	4	Tuesday	37
0300	2	Wednesday	39
0400	0	Thursday	30
0500	0	Friday	29
0600	4	Saturday	32
0700	11	Top Three Times of Day	
0800	15	1700	
0900	8	1600	
1000	8	1200	
1100	15	Top Three Days of Week	
1200	18	Wednesday	
1300	15	Tuesday	
1400	16	Saturday	
1500	14	Top Three Times and Days	
1600	19	Wednesday from 1200 to 1400	
1700	21	Thursday from 1500 to 1700	
1800	16	Tuesday from 1500 to 1700	
1900	9		
2000	5		
2100	2		
2200	3		
2300	3		

Day/Time	Sunday	Monday	Tuesday	Wednesday	Thursday	Friday	Saturday	Grand Total
0000	0	0	0	1	1	0	0	2
0100	1	1	0	0	0	0	0	2
0200	2	1	0	0	0	0	1	4
0300	0	1	1	0	0	0	0	2
0400	0	0	0	0	0	0	0	0
0500	0	0	0	0	0	0	0	0
0600	0	0	0	1	1	0	2	4
0700	0	2	3	0	1	2	3	11
0800	1	1	6	0	2	2	3	15
0900	0	1	1	3	0	0	3	8
1000	1	2	1	3	0	0	1	8
1100	3	3	2	2	0	2	3	15
1200	0	6	2	4	2	2	2	18
1300	1	2	2	2	2	2	4	15
1400	0	1	1	9	2	2	1	16
1500	1	2	5	1	3	2	0	14
1600	0	2	5	3	3	3	3	19
1700	1	0	3	5	6	4	2	21
1800	1	4	1	2	1	5	2	16
1900	1	0	1	3	2	1	1	9
2000	2	1	0	0	2	0	0	5
2100	0	0	2	0	0	0	0	2
2200	0	0	1	0	0	1	1	3
2300	0	0	0	0	2	1	0	3
Grand Total	15	30	37	39	30	29	32	212



Maryland Highway Safety Office



Chestertown Crash Analysis

Impaired Crashes

2016 - 2020

Overall Crash Statistics

Top Hour: 2000

Top Day: Tuesday

Top Months: February and May

Total Crashes

11

Crashes by Gender



73% Male



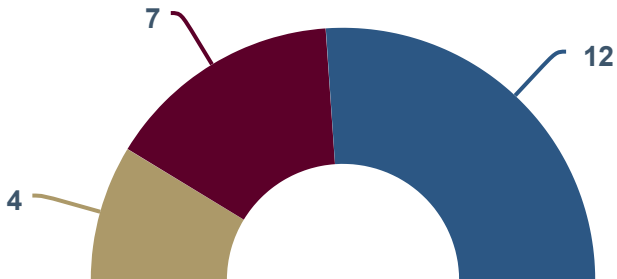
27% Female



91%

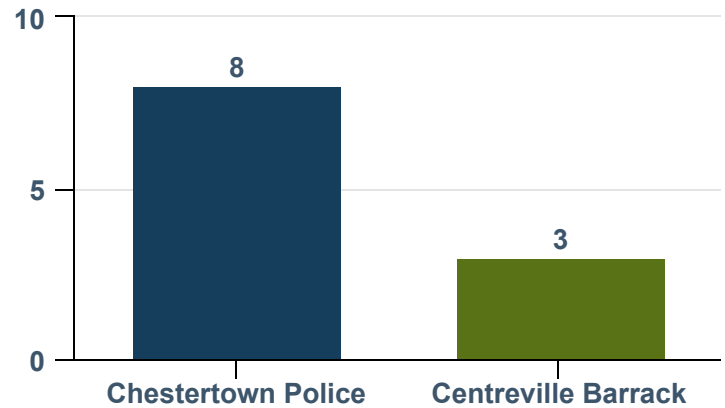
of crashes were intersection-related

Person Report Counts



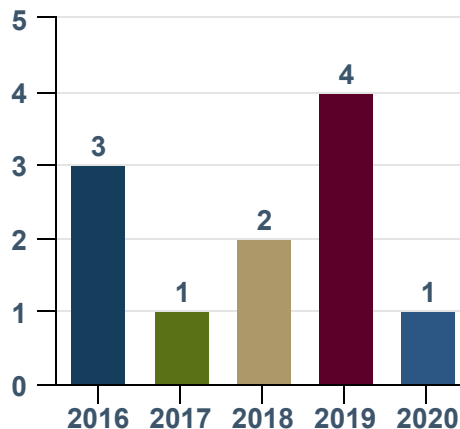
● (B) Suspected Minor Injury
 ● (C) Possible Injury
● (O) No Apparent Injury

Reporting Agencies



90% of Impaired Crashes occurred within a half mile from an on-site liquor license locations

Crashes by Year

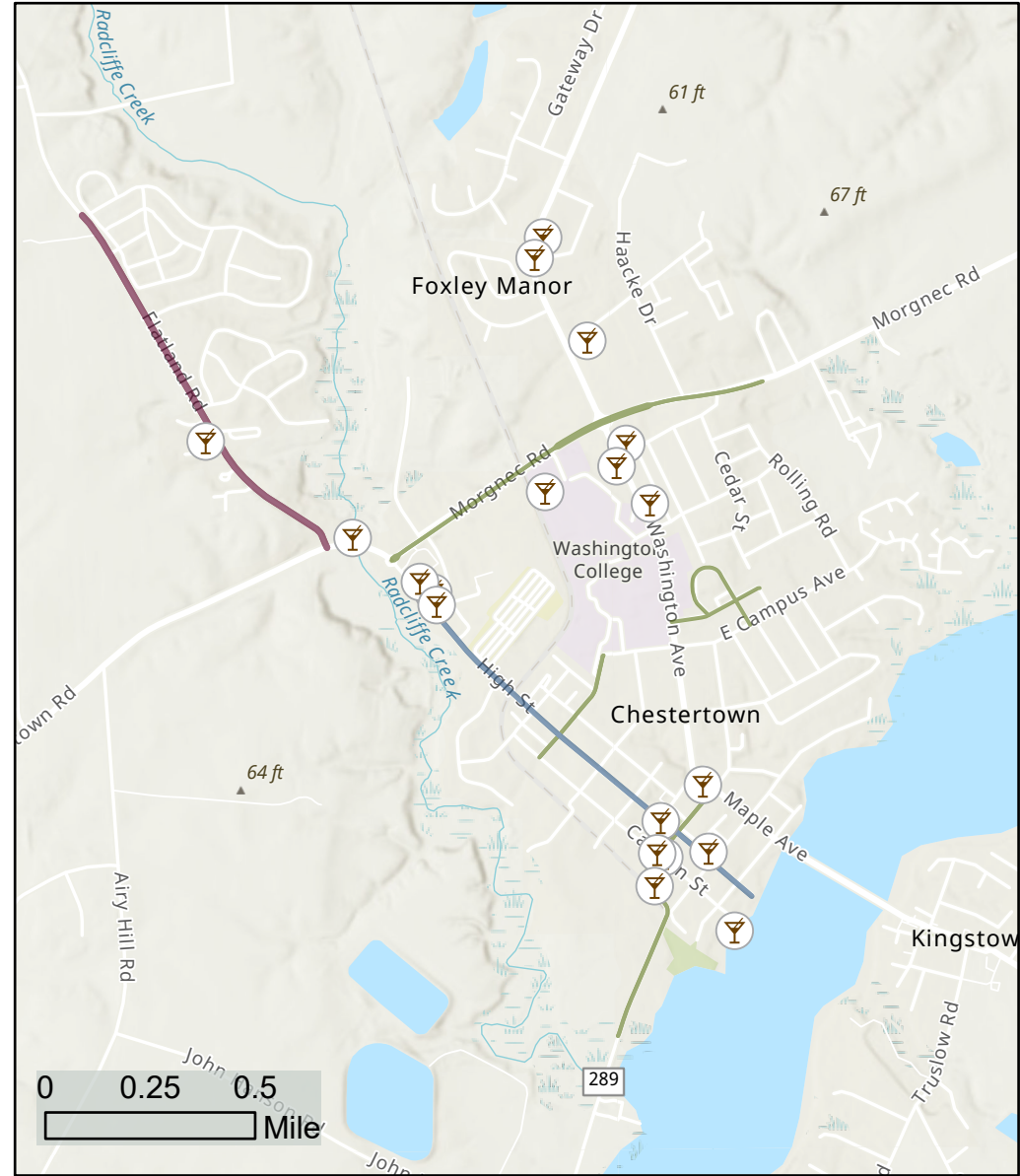
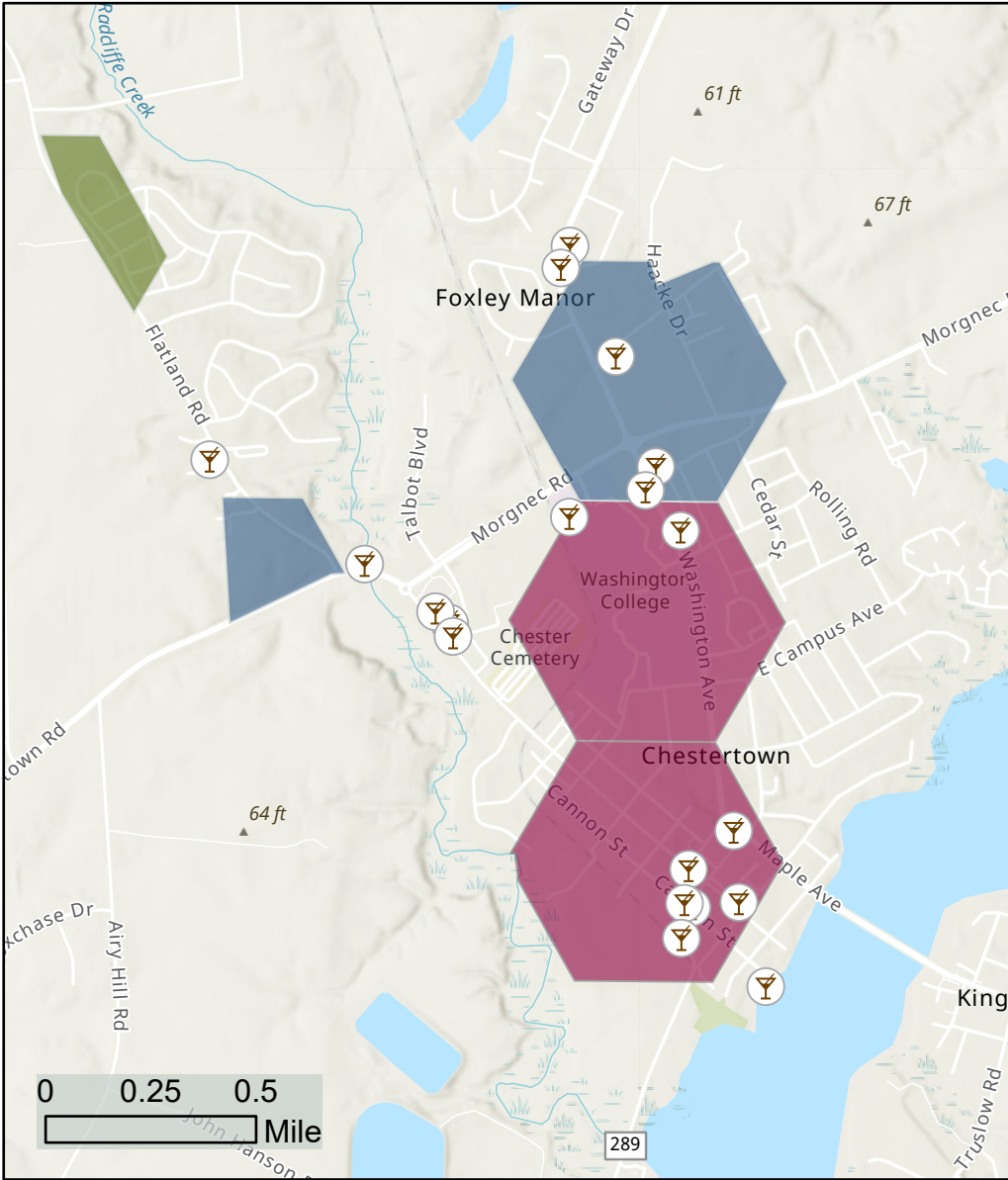


Top Roads Where Crashes Occurred

1. Washington Ave
2. High St

Chestertown Crash Analysis

Impaired Crashes 2016 - 2020



Day and Time Comparison

Chestertown Impaired Crashes 2016—2020

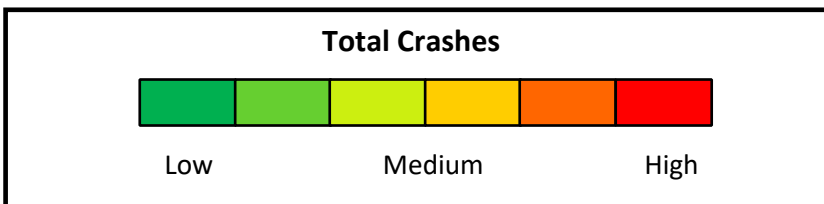
Time of Day		Day of Week	
0000	0	Sunday	2
0100	0	Monday	1
0200	1	Tuesday	4
0300	1	Wednesday	1
0400	0	Thursday	1
0500	0	Friday	0
0600	0	Saturday	2
0700	0		
0800	1		
0900	0		
1000	0		
1100	0		
1200	0		
1300	0		
1400	0		
1500	0		
1600	1		
1700	1		
1800	1		
1900	1		
2000	2		
2100	1		
2200	1		
2300	0		

Top Three Times of Day	
2000	
0200	
0300	

Top Three Days of Week	
Tuesday	
Sunday	
Saturday	

Top Three Times and Days	
Tuesday from 2000 to 2200	
Saturday from 1700 to 1900	
Monday from 0000 to 0200	

Day/Time	Sunday	Monday	Tuesday	Wednesday	Thursday	Friday	Saturday	Grand Total
0000	0	0	0	0	0	0	0	0
0100	0	0	0	0	0	0	0	0
0200	0	1	0	0	0	0	0	1
0300	0	0	1	0	0	0	0	1
0400	0	0	0	0	0	0	0	0
0500	0	0	0	0	0	0	0	0
0600	0	0	0	0	0	0	0	0
0700	0	0	0	0	0	0	0	0
0800	0	0	1	0	0	0	0	1
0900	0	0	0	0	0	0	0	0
1000	0	0	0	0	0	0	0	0
1100	0	0	0	0	0	0	0	0
1200	0	0	0	0	0	0	0	0
1300	0	0	0	0	0	0	0	0
1400	0	0	0	0	0	0	0	0
1500	0	0	0	0	0	0	0	0
1600	0	0	0	1	0	0	0	1
1700	1	0	0	0	0	0	0	1
1800	0	0	0	0	0	0	1	1
1900	0	0	0	0	0	0	1	1
2000	1	0	0	0	1	0	0	2
2100	0	0	1	0	0	0	0	1
2200	0	0	1	0	0	0	0	1
2300	0	0	0	0	0	0	0	0
Grand Total	2	1	4	1	1	0	2	11



Chestertown Crash Analysis

Pedestrian and Bicycle Crashes

2016 - 2020

Overall Crash Statistics

Top Hour: 1700

Top Day: **Wednesday**

Top Month: **May**

Total Crashes

13

Crashes by Gender



73% Male



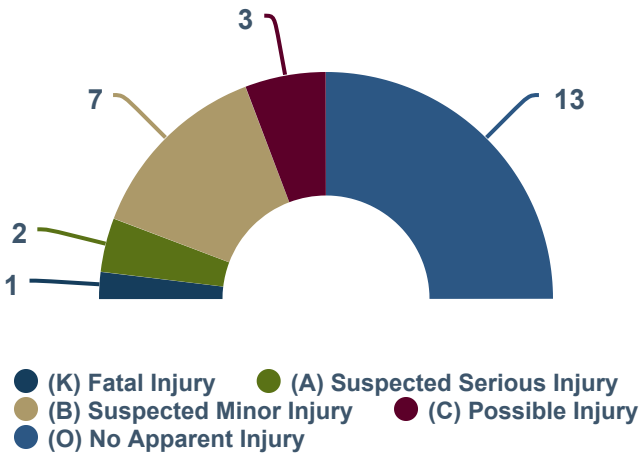
27% Female



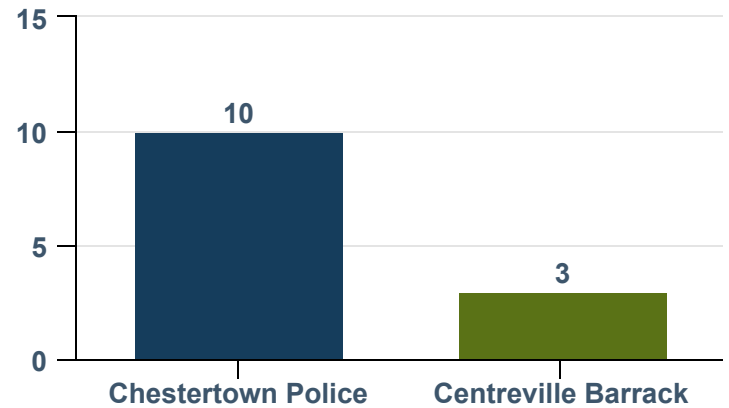
92%

of crashes were intersection-related

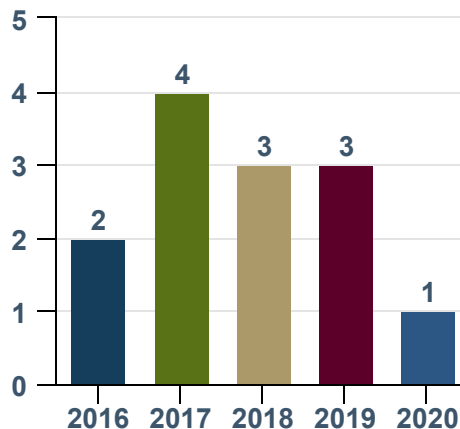
Person Report Counts



Reporting Agencies



Crashes by Year



Top Roads Where Crashes Occurred

1. Washington Ave
2. High St
3. Cannon St



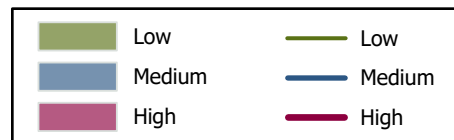
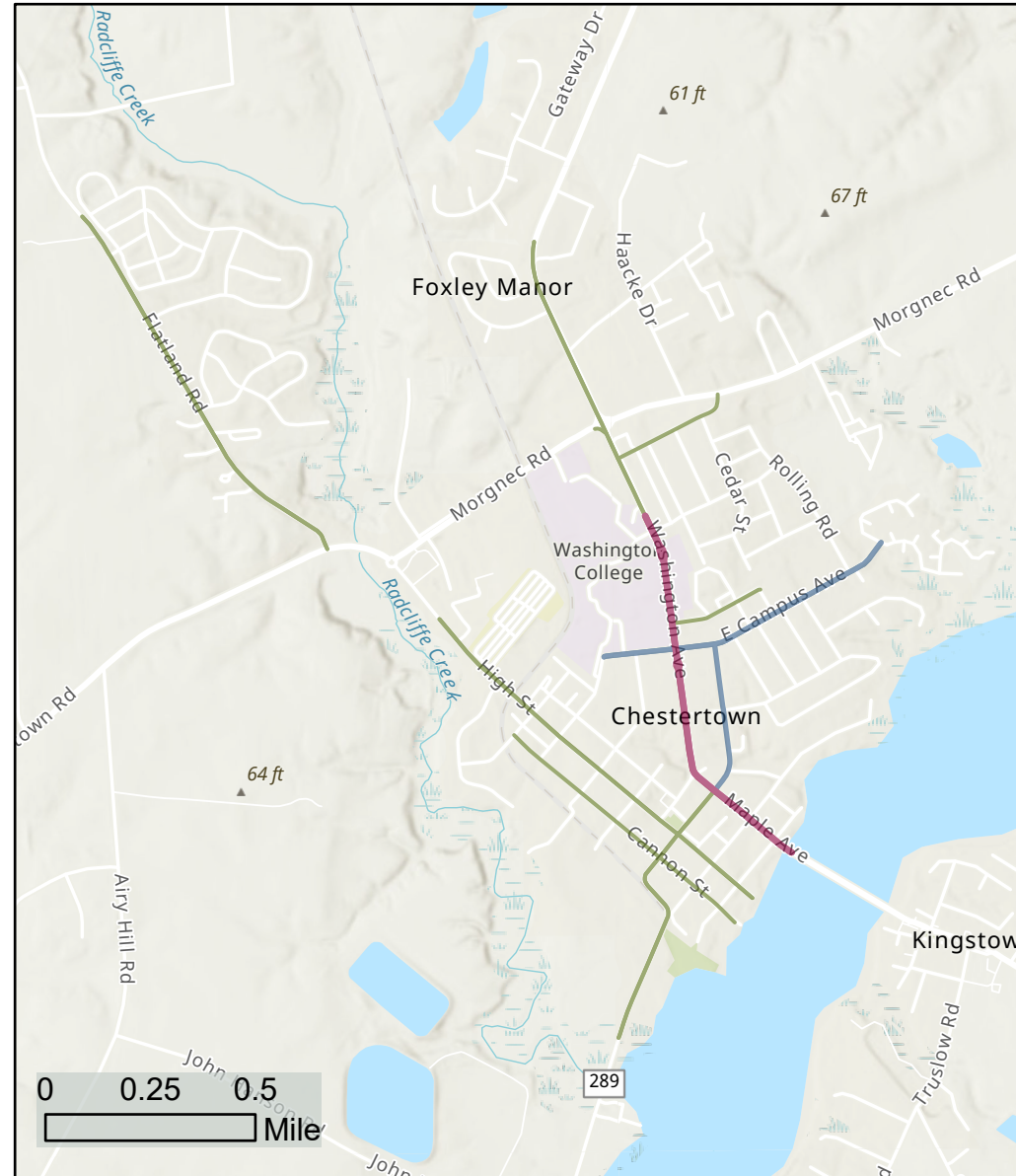
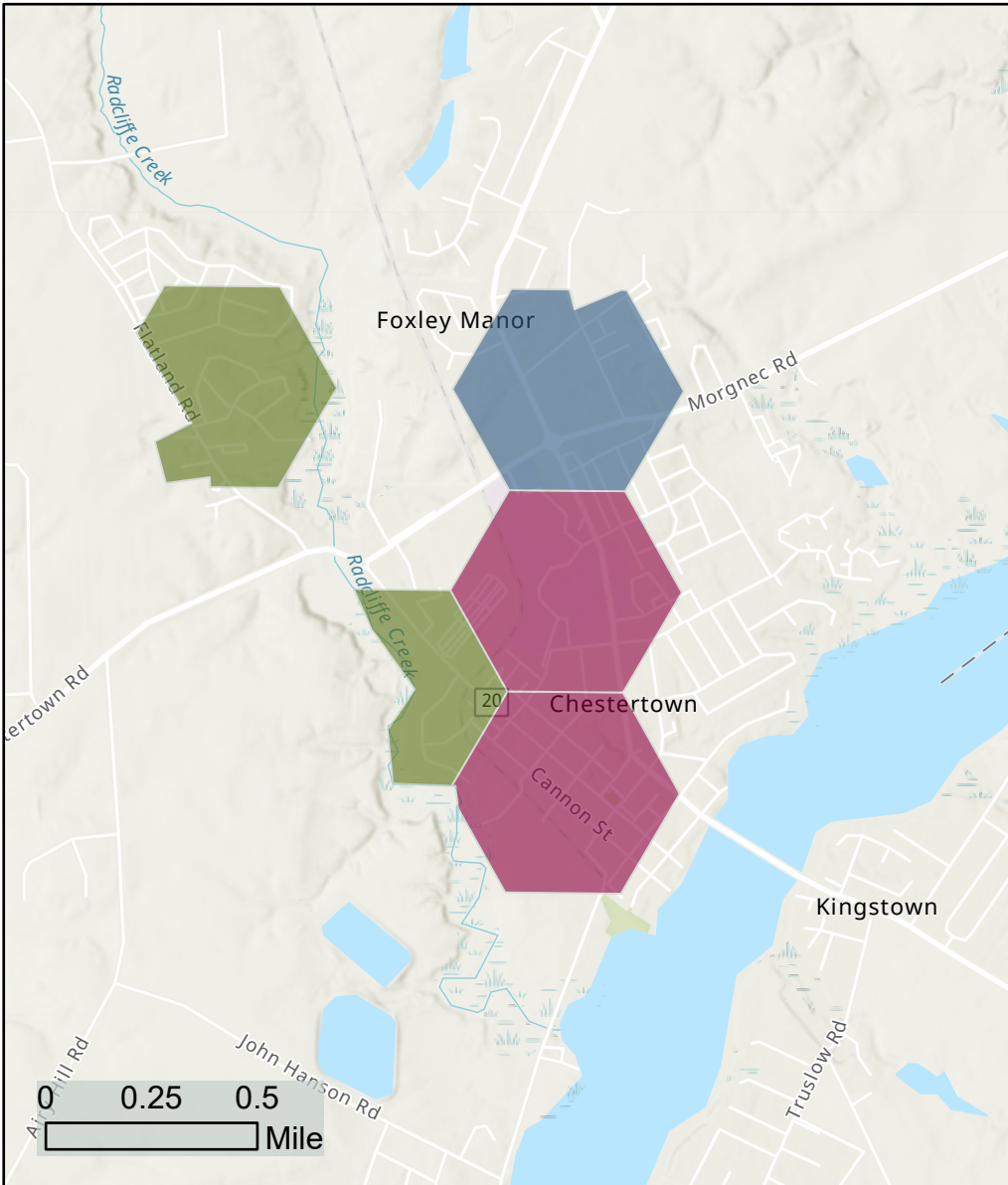
Top Pedestrian and Bicycle Location at Time of Crash:
On Roadway Not At Crosswalk



Top Pedestrian and Bicycle Movement at Time of Crash:
Cross/Enter At Intersection

Chestertown Crash Analysis

Pedestrian and Bicycle Crashes 2016 - 2020



Day and Time Comparison

Chestertown Pedestrian and Bicycle Crashes 2016—2020

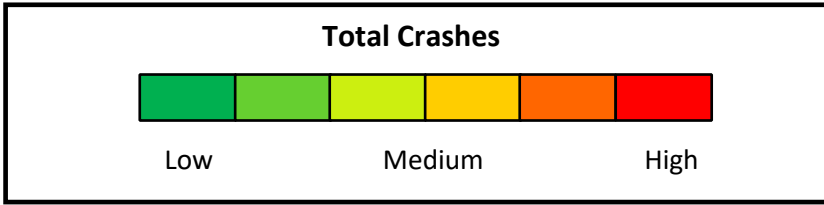
Time of Day		Day of Week	
0000	0	Sunday	0
0100	0	Monday	2
0200	0	Tuesday	2
0300	0	Wednesday	2
0400	0	Thursday	3
0500	0	Friday	2
0600	0	Saturday	2
0700	0		
0800	1		
0900	0		
1000	1		
1100	1		
1200	1		
1300	0		
1400	0		
1500	2		
1600	2		
1700	2		
1800	3		
1900	0		
2000	0		
2100	0		
2200	0		
2300	0		

Top Three Times of Day	
1800	
1500	
1600	

Top Three Days of Week	
Thursday	
Monday	
Tuesday	

Top Three Times and Days	
Thursday from 1300 to 1500	
Friday from 1600 to 1800	
Tuesday from 1000 to 1200	

Day/Time	Sunday	Monday	Tuesday	Wednesday	Thursday	Friday	Saturday	Grand Total
0000	0	0	0	0	0	0	0	0
0100	0	0	0	0	0	0	0	0
0200	0	0	0	0	0	0	0	0
0300	0	0	0	0	0	0	0	0
0400	0	0	0	0	0	0	0	0
0500	0	0	0	0	0	0	0	0
0600	0	0	0	0	0	0	0	0
0700	0	0	0	0	0	0	0	0
0800	0	0	0	0	0	0	1	1
0900	0	0	0	0	0	0	0	0
1000	0	1	0	0	0	0	0	1
1100	0	0	0	1	0	0	0	1
1200	0	0	1	0	0	0	0	1
1300	0	0	0	0	0	0	0	0
1400	0	0	0	0	0	0	0	0
1500	0	0	0	0	2	0	0	2
1600	0	0	1	0	0	0	1	2
1700	0	0	0	1	0	1	0	2
1800	0	1	0	0	1	1	0	3
1900	0	0	0	0	0	0	0	0
2000	0	0	0	0	0	0	0	0
2100	0	0	0	0	0	0	0	0
2200	0	0	0	0	0	0	0	0
2300	0	0	0	0	0	0	0	0
Grand Total	0	2	2	2	3	2	2	13



Chestertown Crash Analysis

Speeding Crashes 2016 - 2020

Overall Crash Statistics

Top Hours: 0800, 1700,
1900, 2000 and 2200

Top Day: Tuesday

Top Month: May

Total Crashes

5

Crashes by Gender



80%
Male



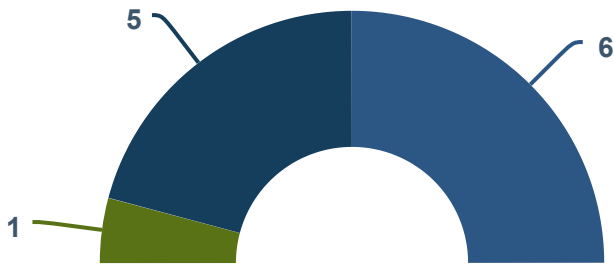
20%
Female



80%

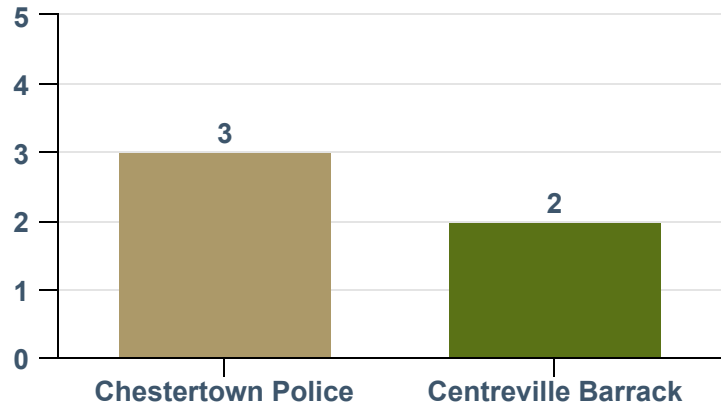
of crashes were
intersection-related

Person Report Counts

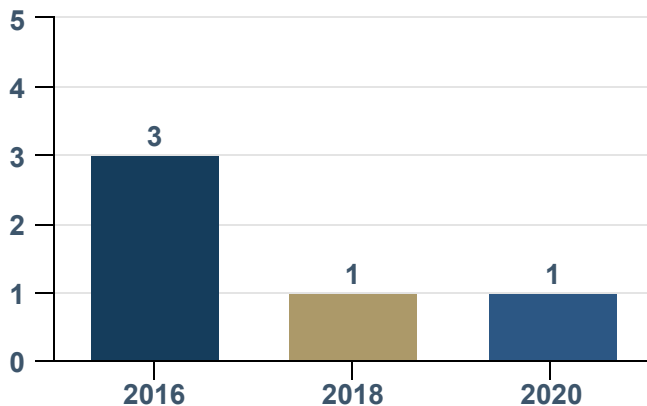


● (A) Suspected Serious Injury
● (B) Suspected Minor Injury ● (O) No Apparent Injury

Reporting Agencies



Crashes by Year

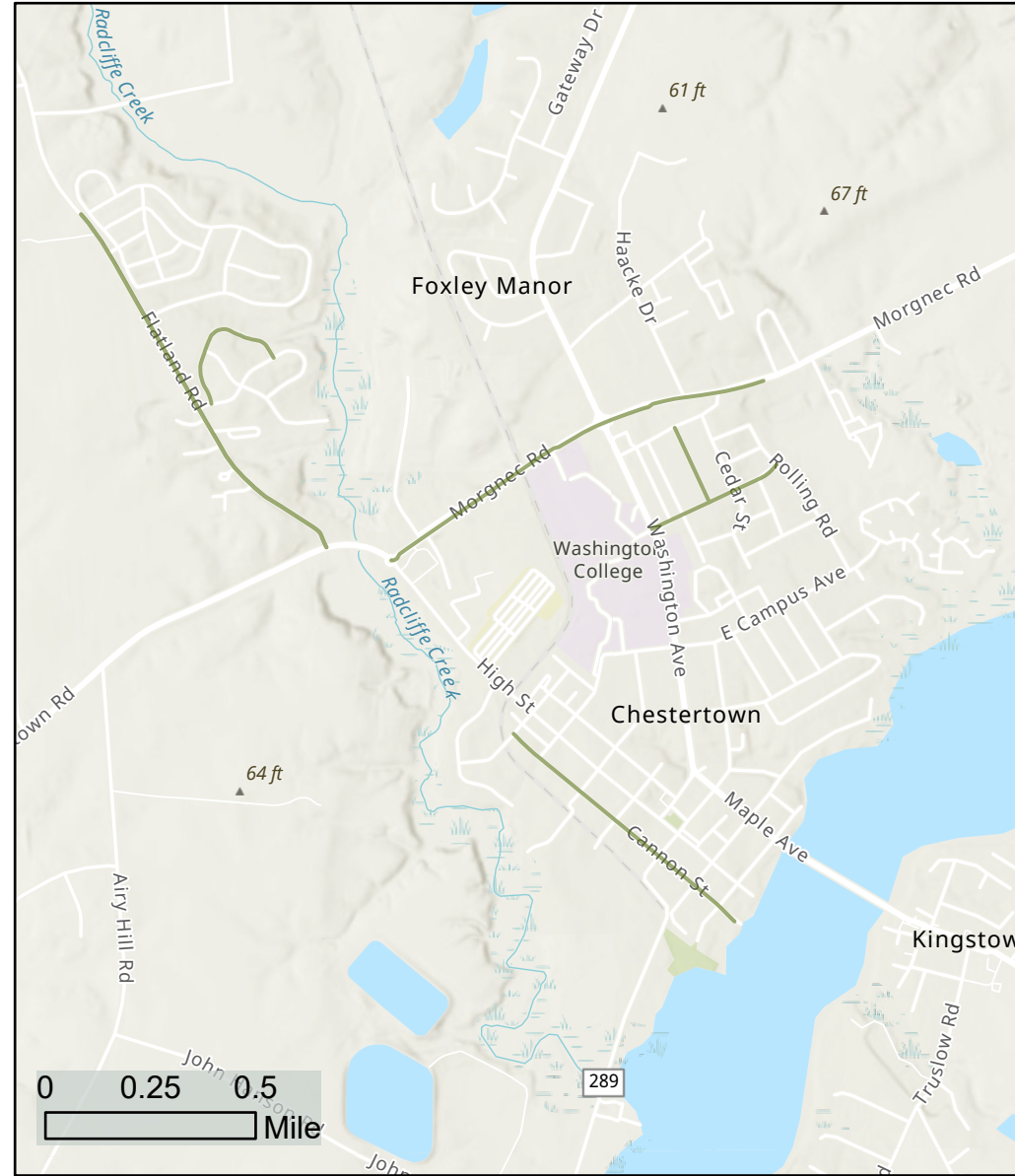
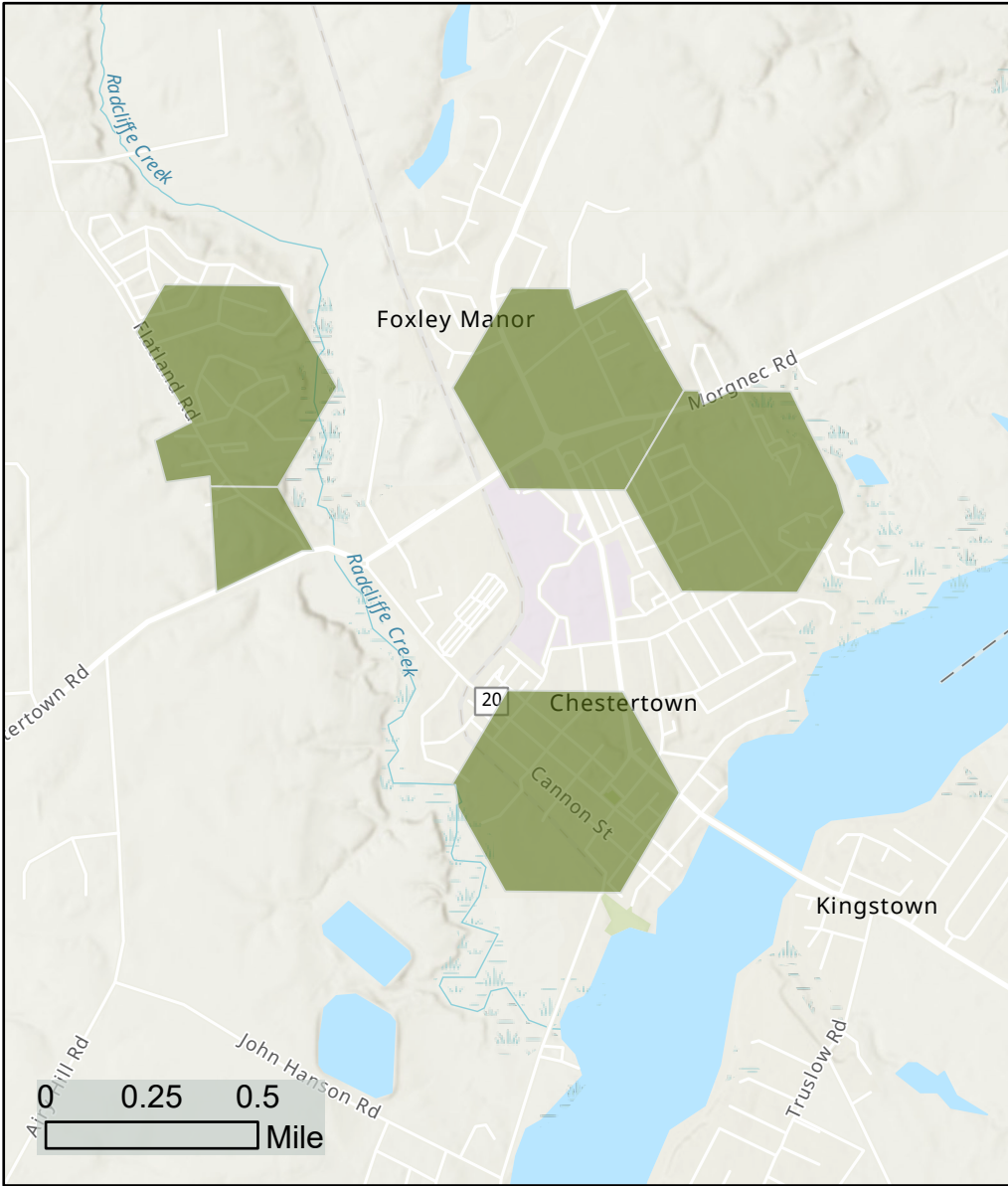


Roads Where Crashes Occurred

1. Cross St
2. Morgnec Rd
3. Kennedy Dr
4. Greenwood Ave
5. Flatland Rd

Chestertown Crash Analysis

Speeding Crashes 2016 - 2020



Day and Time Comparison

Chestertown Speeding Crashes 2016—2020

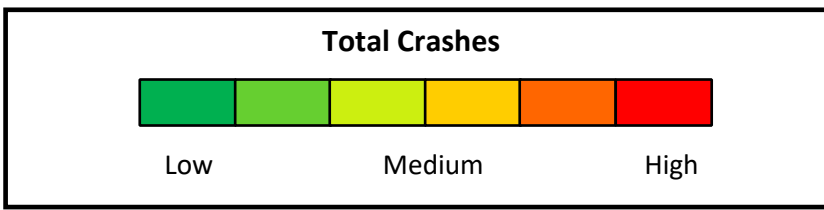
Time of Day		Day of Week	
0000	0	Sunday	0
0100	0	Monday	1
0200	0	Tuesday	3
0300	0	Wednesday	0
0400	0	Thursday	1
0500	0	Friday	0
0600	0	Saturday	0
0700	0		
0800	1		
0900	0		
1000	0		
1100	0		
1200	0		
1300	0		
1400	0		
1500	0		
1600	0		
1700	1		
1800	0		
1900	1		
2000	1		
2100	0		
2200	1		
2300	0		

Top Three Times of Day	
0800	
1700	
1900	

Top Three Days of Week	
Tuesday	
Monday	
Thursday	

Top Three Times and Days	
Monday from 1800 to 2000	
Tuesday from 0600 to 0800	
Tuesday from 1500 to 1700	

Day/Time	Sunday	Monday	Tuesday	Wednesday	Thursday	Friday	Saturday	Grand Total
0000	0	0	0	0	0	0	0	0
0100	0	0	0	0	0	0	0	0
0200	0	0	0	0	0	0	0	0
0300	0	0	0	0	0	0	0	0
0400	0	0	0	0	0	0	0	0
0500	0	0	0	0	0	0	0	0
0600	0	0	0	0	0	0	0	0
0700	0	0	0	0	0	0	0	0
0800	0	0	1	0	0	0	0	1
0900	0	0	0	0	0	0	0	0
1000	0	0	0	0	0	0	0	0
1100	0	0	0	0	0	0	0	0
1200	0	0	0	0	0	0	0	0
1300	0	0	0	0	0	0	0	0
1400	0	0	0	0	0	0	0	0
1500	0	0	0	0	0	0	0	0
1600	0	0	0	0	0	0	0	0
1700	0	0	1	0	0	0	0	1
1800	0	0	0	0	0	0	0	0
1900	0	0	0	0	1	0	0	1
2000	0	1	0	0	0	0	0	1
2100	0	0	0	0	0	0	0	0
2200	0	0	1	0	0	0	0	1
2300	0	0	0	0	0	0	0	0
Grand Total	0	1	3	0	1	0	0	5



Maryland Highway Safety Office



Chestertown Crash Analysis

Intersection Related Crashes

2016 - 2020

Overall Crash Statistics

Top Hours: 1200, 1500, 1600 and 1700

Top Day: Saturday

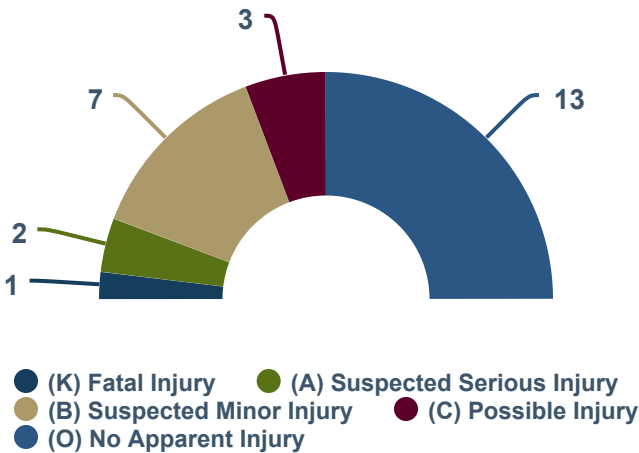
Top Months: May and December



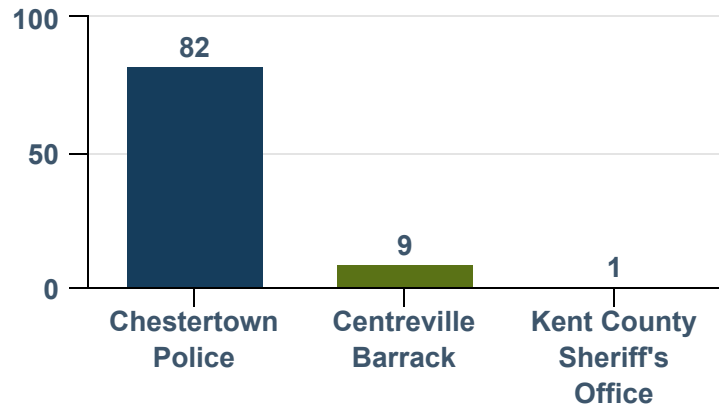
Crashes by Gender



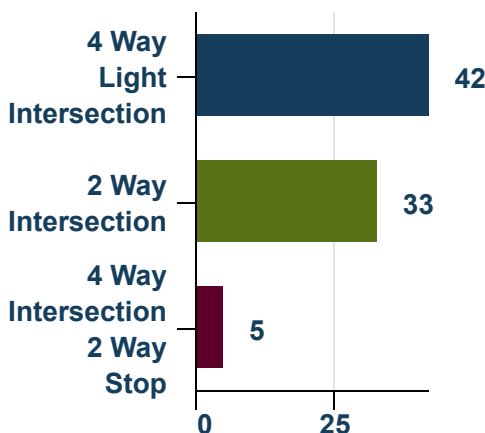
Person Report Counts



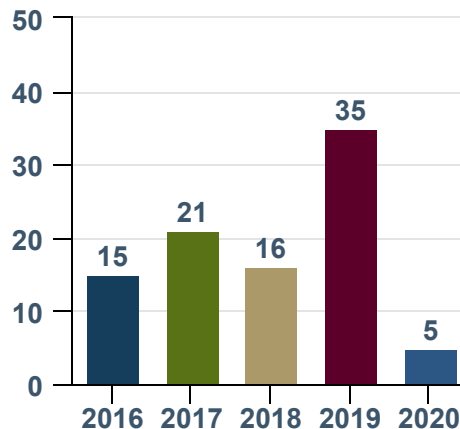
Reporting Agencies



Top Intersection Types



Crashes by Year

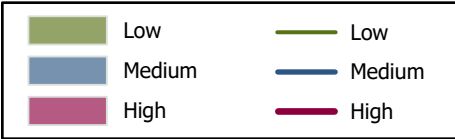
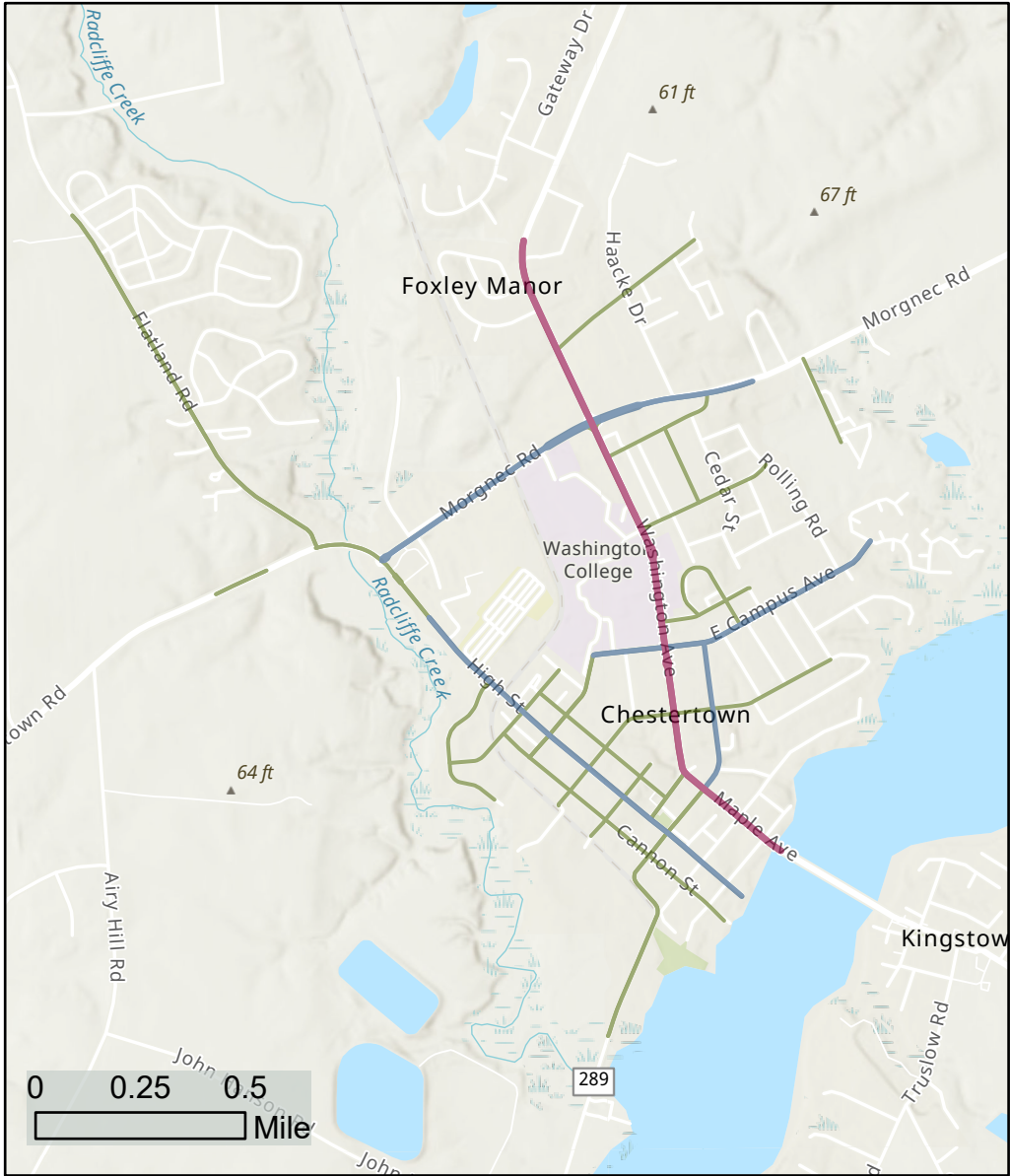
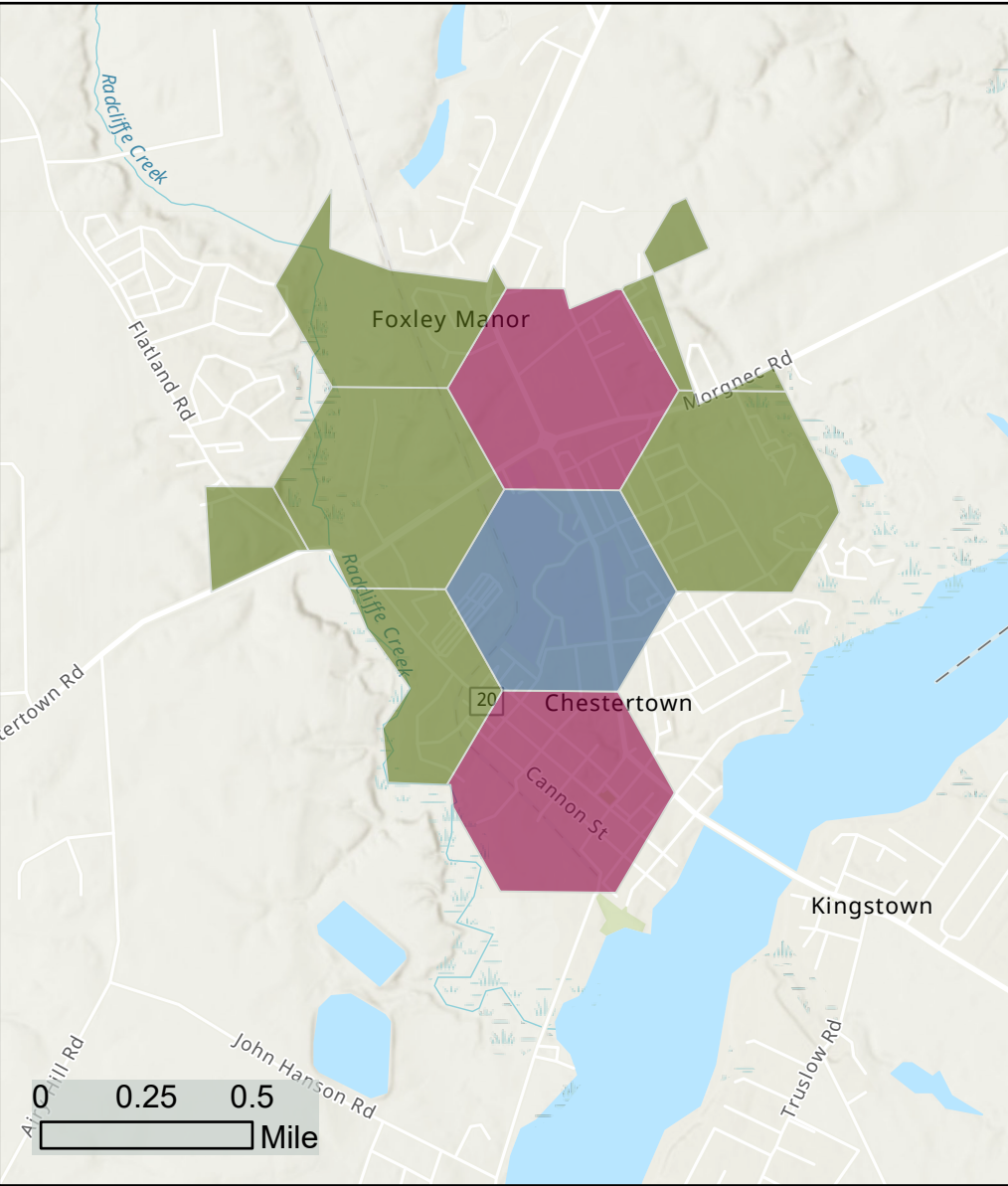


Top Roads Where Crashes Occurred

1. Washington Ave
2. High St
3. Morgnec Rd

Chestertown Crash Analysis

Intersection Related Crashes 2016 - 2020

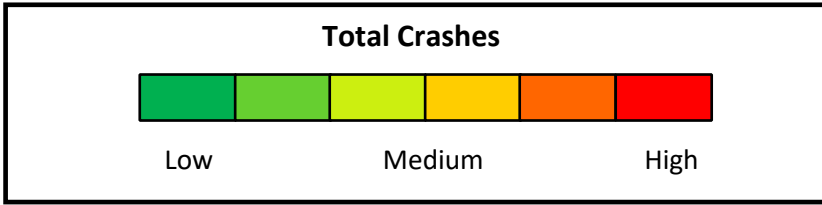


Day and Time Comparison

Chestertown Intersection Related Crashes 2016—2020

Time of Day		Day of Week	
0000	1	Sunday	4
0100	1	Monday	13
0200	1	Tuesday	15
0300	0	Wednesday	16
0400	0	Thursday	12
0500	0	Friday	14
0600	1	Saturday	18
0700	4	Top Three Times of Day	
0800	7	1200	
0900	5	1500	
1000	1	1600	
1100	7	Top Three Days of Week	
1200	9	Saturday	
1300	7	Wednesday	
1400	8	Tuesday	
1500	9	Top Three Times and Days	
1600	9	Tuesday from 1300 to 1500	
1700	9	Wednesday from 1600 to 1800	
1800	7	Friday from 1400 to 1600	
1900	2		
2000	3		
2100	1		
2200	0		
2300	0		

Day/Time	Sunday	Monday	Tuesday	Wednesday	Thursday	Friday	Saturday	Grand Total
0000	0	0	0	1	0	0	0	1
0100	1	0	0	0	0	0	0	1
0200	0	0	0	0	0	0	1	1
0300	0	0	0	0	0	0	0	0
0400	0	0	0	0	0	0	0	0
0500	0	0	0	0	0	0	0	0
0600	0	0	0	0	0	0	1	1
0700	0	2	0	0	0	1	1	4
0800	0	0	4	0	0	0	3	7
0900	0	1	1	2	0	0	1	5
1000	0	1	0	0	0	0	0	1
1100	1	1	1	1	0	1	2	7
1200	0	2	1	0	2	2	2	9
1300	0	0	2	1	2	0	2	7
1400	0	1	0	4	1	2	0	8
1500	0	2	4	0	2	1	0	9
1600	0	1	0	2	1	3	2	9
1700	0	0	1	4	2	1	1	9
1800	1	1	0	1	1	2	1	7
1900	0	0	0	0	0	1	1	2
2000	1	1	0	0	1	0	0	3
2100	0	0	1	0	0	0	0	1
2200	0	0	0	0	0	0	0	0
2300	0	0	0	0	0	0	0	0
Grand Total	4	13	15	16	12	14	18	92



Appendix

Crashes

Crash data was obtained from Maryland State Highway Administration. Crash data years range from 2016 to 2020.

- Crashes were queried by location to include only crashes in Chestertown.
- Crashes were queried to include Overall, Speeding, Impaired, Intersection, and Pedestrian and Bicycle
- Street Segments were obtained from Md iMap for Chestertown. The counts of joined crashes were symbolized based on the counts per one mile segment.

Crash Queries

Pedestrian and Bicycle Crash Query:

Pedestrian_Type IN ('01', '02', '03')

Intersection Crash Query:

Intersection IN ('02', '03')

Speeding Crash Query:

Contributing_Factor_1 IN ('21', '18') Or Contributing_Factor_2 IN ('21', '18') Or Contributing_Factor_3 IN ('21', '18') Or Contributing_Factor_4 IN ('21', '18')

Impaired Crash Query:

Accident_Condition IN ('A', 'B', 'D') Or Substance_Use_Code IN ('11', '12', '13', '14', '21', '23', '22', '24') Or Contributing_Factor_1 IN ('01', '02', '03', '04') Or Contributing_Factor_2 IN ('01', '02', '03', '04') Or Contributing_Factor_3 IN ('01', '02', '03', '04') Or Contributing_Factor_4 IN ('01', '02', '03', '04')

Additional Notes

Hexagon Bins are 1/4 mile in size.

Sources: State Highway Administration and Washington College GIS Program

Restriction of Liability: Although every effort was made to provide useful and accurate information, Washington College and the Maryland Highway Safety Office make no claims, promises, or guarantees about the accuracy, completeness, or adequacy of the contents of these maps and expressly disclaim liability for any errors or omissions in the contents of these documents.

Disclaimer: The crashes displayed on the map as well as any other information is limited in its scope and purpose. It was compiled and collected for the purpose of identifying, evaluating, and planning safety enhancements, utilizing Federal-aid highway funds pursuant to sections 130, 144 and/or 148 of Title 23 of the United States Code 18