

RAVEN

Risk Analysis of Vehicle Environment Network

WHAT: This free web application displays and analyzes crash and electronic citation data (E-TIX) for every Maryland jurisdiction.

WHY: Easily analyze crash and E-TIX trends and spatial statistics for your local area. The map's layers correlate with High Visibility Enforcement (HVE) campaigns that target dangerous behaviors such as aggressive, impaired, and distracted driving, and lack of restraint use.

WHO: RAVEN is a resource for law enforcement, traffic-safety, and injury-prevention professionals.

RAVEN Contact Us

MOTOR VEHICLE ADMINISTRATION

MARYLAND DEPARTMENT OF TRANSPORTATION

Maryland Highway Safety Office

Washington College

Geographic Information Systems

Find address or place

Legend

Data Layers

Overall Crashes

Hotspots

Road Segments

Injury, Severe, and Fatal Crash Hotspots

Overall Citations

Impaired Crashes

Aggressive Driving Crashes

Distracted Driving Crashes

Pedestrian Crashes

Unrestrained Occupants Crashes

Unrestrained Occupants Citations

Seatbelt Observation Sites

Liquor License Establishments

Pilot Data

Printable maps and images

County of Anne Arundel, VITA, Esri, HERE, Garmin, INCREMENT P, NGA, USGS

Map Layers

Hotspots and One-Mile Road Segments

- Overall Crashes
- Traffic Violations (E-TIX)
- Impaired Driving Crashes
- Aggressive Driving Crashes
- Distracted Driving Crashes
- Unrestrained Occupants

Point Layers

- Seatbelt Use Observation Sites/Rates
- Liquor License Establishments

Additional Features

- **Calendar:**
View MDOT Highway Safety Office HVE dates.
- **Data Dictionary:**
Explains the methodology and symbology behind the web map layers.
- **Downloads:**
Additional resources: Data Dictionary, HVE Guide, etc.
- **Make a Request for Customized Data Products/Analysis**
- **Training Sessions/Events**

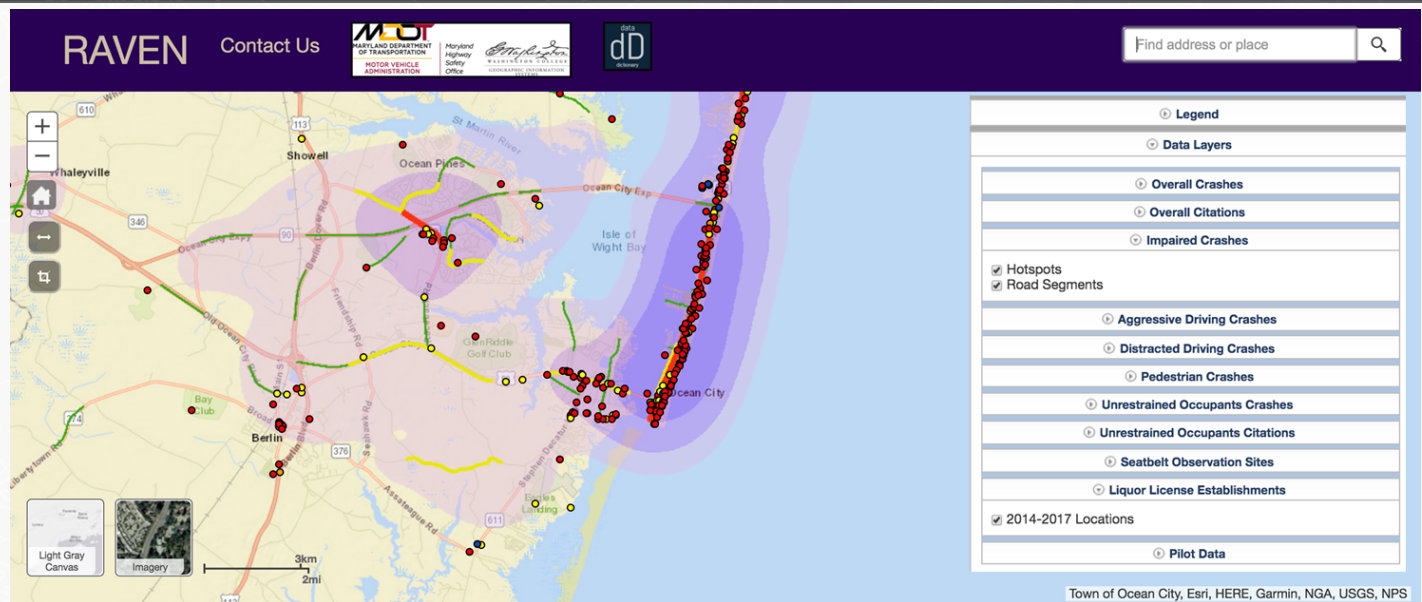
RAVEN

Risk Analysis of Vehicle Environment Network

WHAT: This free web application displays and analyzes crash and electronic citation data (E-TIX) for every Maryland jurisdiction.

WHY: Easily analyze crash and E-TIX trends and spatial statistics for your local area. The map's layers correlate with High Visibility Enforcement (HVE) campaigns that target dangerous behaviors such as aggressive, impaired, and distracted driving, and lack of restraint use.

WHO: RAVEN is a resource for law enforcement, traffic-safety, and injury-prevention professionals.



Map Layers

Hotspots and One-Mile Road Segments

- Overall Crashes
- Traffic Violations (E-TIX)
- Impaired Driving Crashes
- Aggressive Driving Crashes
- Distracted Driving Crashes
- Unrestrained Occupants

Point Layers

- Seatbelt Use Observation Sites/Rates
- Liquor License Establishments

Additional Features

- **Calendar:**
View MDOT Highway Safety Office HVE dates.
- **Data Dictionary:**
Explains the methodology and symbology behind the web map layers.
- **Downloads:**
Additional resources: Data Dictionary, HVE Guide, etc.
- **Make a Request for Customized Data Products/Analysis**
- **Training Sessions/Events**

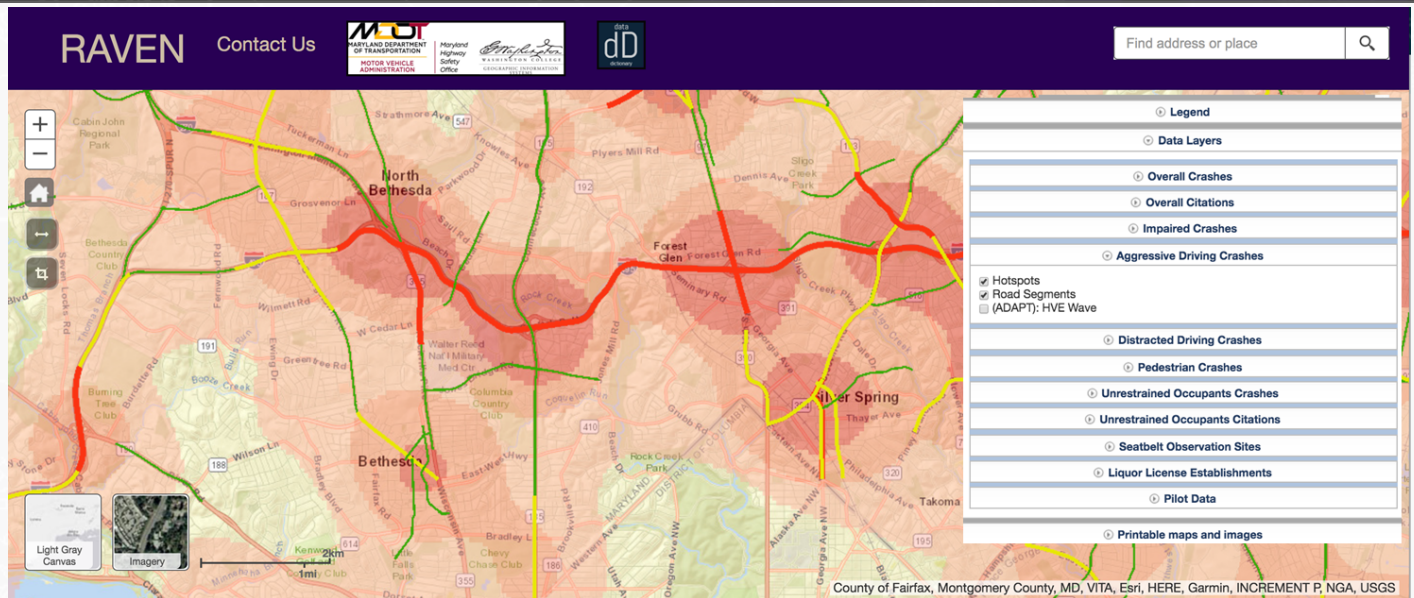
RAVEN

Risk Analysis of Vehicle Environment Network

WHAT: This free web application displays and analyzes crash and electronic citation data (E-TIX) for every Maryland jurisdiction.

WHY: Easily analyze crash and E-TIX trends and spatial statistics for your local area. The map's layers correlate with High Visibility Enforcement (HVE) campaigns that target dangerous behaviors such as aggressive, impaired, and distracted driving, and lack of restraint use.

WHO: RAVEN is a resource for law enforcement, traffic-safety, and injury-prevention professionals.



Map Layers

Hotspots and One-Mile Road Segments

- Overall Crashes
- Traffic Violations (E-TIX)
- Impaired Driving Crashes
- Aggressive Driving Crashes
- Distracted Driving Crashes
- Unrestrained Occupants

Point Layers

- Seatbelt Use Observation Sites/Rates
- Liquor License Establishments

Additional Features

- **Calendar:**
View MDOT Highway Safety Office HVE dates.
- **Data Dictionary:**
Explains the methodology and symbology behind the web map layers.
- **Downloads:**
Additional resources: Data Dictionary, HVE Guide, etc.
- **Make a Request for Customized Data Products/Analysis**
- **Training Sessions/Events**

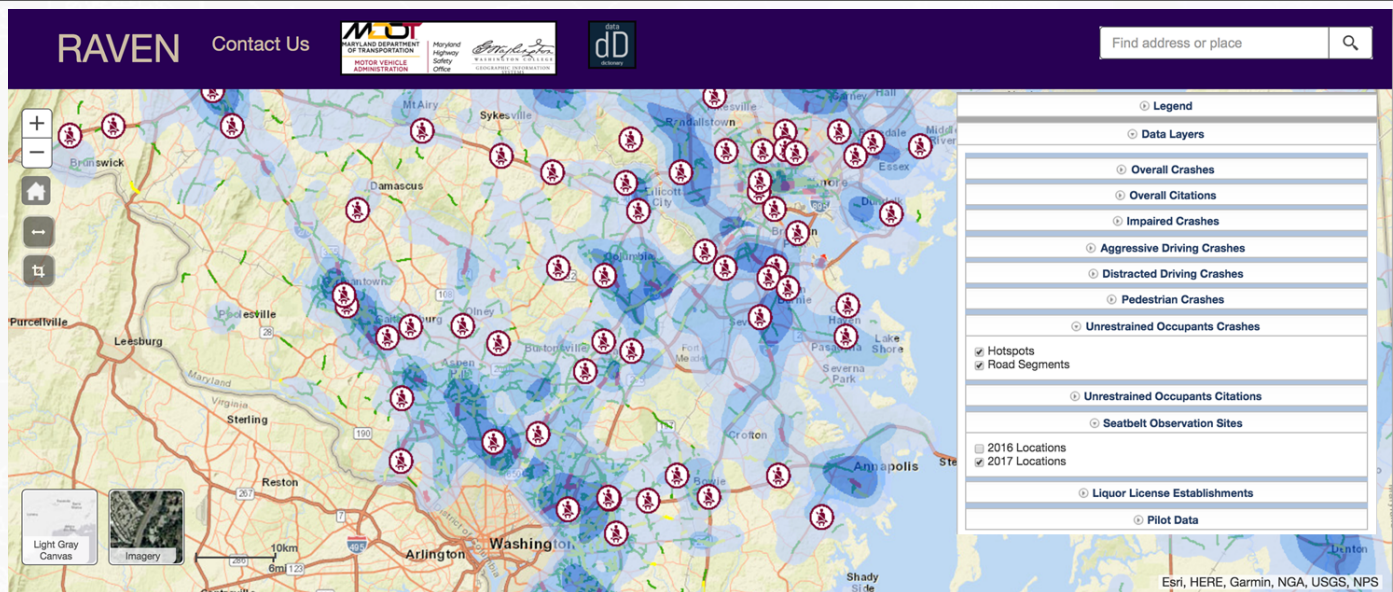
RAVEN

Risk Analysis of Vehicle Environment Network

WHAT: This free web application displays and analyzes crash and electronic citation data (E-TIX) for every Maryland jurisdiction.

WHY: Easily analyze crash and E-TIX trends and spatial statistics for your local area. The map's layers correlate with High Visibility Enforcement (HVE) campaigns that target dangerous behaviors such as aggressive, impaired, and distracted driving, and lack of restraint use.

WHO: RAVEN is a resource for law enforcement, traffic-safety, and injury-prevention professionals.



Map Layers

Hotspots and One-Mile Road Segments

- Overall Crashes
- Traffic Violations (E-TIX)
- Impaired Driving Crashes
- Aggressive Driving Crashes
- Distracted Driving Crashes
- Unrestrained Occupants

Point Layers

- Seatbelt Use Observation Sites/Rates
- Liquor License Establishments

Additional Features

- **Calendar:**
View MDOT Highway Safety Office HVE dates.
- **Data Dictionary:**
Explains the methodology and symbology behind the web map layers.
- **Downloads:**
Additional resources: Data Dictionary, HVE Guide, etc.
- **Make a Request for Customized Data Products/Analysis**
- **Training Sessions/Events**

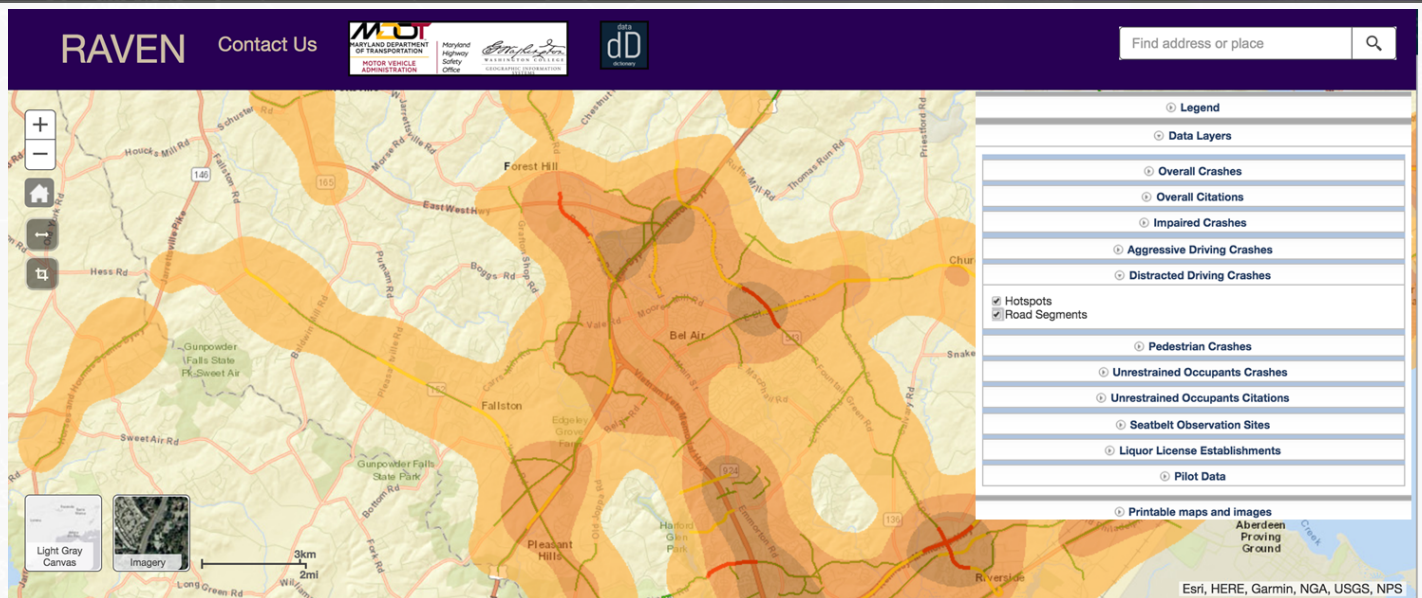
RAVEN

Risk Analysis of Vehicle Environment Network

WHAT: This free web application displays and analyzes crash and electronic citation data (E-TIX) for every Maryland jurisdiction.

WHY: Easily analyze crash and E-TIX trends and spatial statistics for your local area. The map's layers correlate with High Visibility Enforcement (HVE) campaigns that target dangerous behaviors such as aggressive, impaired, and distracted driving, and lack of restraint use.

WHO: RAVEN is a resource for law enforcement, traffic-safety, and injury-prevention professionals.



Map Layers

Hotspots and One-Mile Road Segments

- Overall Crashes
- Traffic Violations (E-TIX)
- Impaired Driving Crashes
- Aggressive Driving Crashes
- Distracted Driving Crashes
- Unrestrained Occupants

Point Layers

- Seatbelt Use Observation Sites/Rates
- Liquor License Establishments

Additional Features

- **Calendar:**
View MDOT Highway Safety Office HVE dates.
- **Data Dictionary:**
Explains the methodology and symbology behind the web map layers.
- **Downloads:**
Additional resources: Data Dictionary, HVE Guide, etc.
- **Make a Request for Customized Data Products/Analysis**
- **Training Sessions/Events**